

# BANSAL

INSTITUTE OF ENGINEERING  
AND TECHNOLOGY LUCKNOW



Approved by AICTE, New Delhi & Affiliated to Dr. A.P.J. Abdul Kalam Technical University  
(formerly U.P. Technical University)

📍 NH-24, Sitapur Road, Lucknow - 226201

☎ Ph. : 9554999937 / 38 / 39

🌐 Website : [www.bansaliet.in](http://www.bansaliet.in) ✉ E-mail : [info@bansaliet.in](mailto:info@bansaliet.in)



AKTU COLLEGE CODE : 422

# BANSAL

INSTITUTE OF ENGINEERING  
AND TECHNOLOGY LUCKNOW

2026 - 2027



NBA ACCREDITED IN  
B. TECH ELECTRICAL ENGINEERING,  
BIO TECHNOLOGY AND  
INFORMATION TECHNOLOGY



Prospectus

B.Tech. | M.Tech. | M.B.A.

Established in the year 2008 under the guidance of Shri G. S. Agrawal, founder of the Bansal Educational Trust, the Bansal Institute of Engineering and Technology was set up with the approval of the All-India Council for Technical Education (AICTE), New Delhi, and is affiliated with Dr. A.P.J. Abdul Kalam Technical University, Lucknow. The institute offers undergraduate courses in engineering as well as postgraduate programs in business administration and engineering.

Since its inception in 2008, the Bansal Institute of Engineering and Technology has made remarkable progress and continues to grow steadily. Over the years, the institute has expanded significantly across various dimensions—be it academic excellence, student intake, or placement opportunities offered to students. In just 18 years, the institute has grown to accommodate 3,174 students, which stands as a strong testament to its commitment to quality education and continuous development.

**BANSAL** 

## EDUCATIONAL TRUST

India is currently experiencing an era defined by rapid advancements in science and technology, resulting in an unprecedented demand for technical education. The socio-economic landscape of the present day has undergone a profound transformation compared to that of even a few decades ago. In this context, technical education has emerged as a cornerstone of modern development, imparting specialized knowledge and skills in various trades, crafts, and professions. Increasingly, it has complemented and, in many cases, supplanted traditional general education by aligning learning with professional and industry requirements. Consequently, it provides enhanced opportunities for gainful employment and sustainable career growth.



Technical education plays a pivotal role in addressing the expanding and evolving needs of society. The proliferation of industries, mechanized systems, and advanced research centers across the globe underscores the shift from conventional manual practices to technology-driven processes. This transition highlights the necessity of embracing modern tools and innovations to achieve holistic development and the continuous regeneration of society.

In pursuit of this vision, the Bansal Educational Trust was established on 31st March 2007 with the objective of promoting quality education in Lucknow and its adjoining regions. Despite its status as the capital of Uttar Pradesh, Lucknow faced a notable gap in access to high-quality technical education. Recognizing this critical need, Shri G. S. Agrawal, Founder of the Trust, articulated the concerns of parents and stakeholders and emphasized the urgency of bridging the gap between education seekers and providers.

The Trust's first major initiative materialized in 2008 with the establishment of the Bansal Institute of Engineering and Technology, a premier institution dedicated to higher technical education. The institute was inaugurated by Sant Morari Bapu and was established with the approval of the All-India Council for Technical Education (AICTE) and the Ministry of Human Resource Development (MHRD), New Delhi.

Subsequently, in response to the growing educational needs of the region, the Bansal Educational Trust expanded its academic footprint. In 2014, it established a CBSE-patterned intermediate school in collaboration with the Jaipuria Group, with the aim of delivering comprehensive, value-based, and quality education at the school level. This initiative reflects the Trust's continued commitment to nurturing future generations and contributing meaningfully to the educational ecosystem.

## VISION

To be the most sought-after destination in the country in providing quality technical education & be known for producing knowledge driven, skilled & industry ready engineers who can contribute to building a strong nation & society.

## MISSION

- M1: Offer a dynamic, interactive & practical education that engages students in the learning process.
- M2: To empower every student by providing an environment that encourages knowledge enhancement, application & growth by engaging management, teachers, students, alumni & industry in the process.
- M3: Provide clear learning outcomes by building a robust system of imparting knowledge, analyzing result, taking feedback & improving systems.
- M4: Continuous commitment to improvement for producing knowledgeable, skilled & industry-ready professionals.



**G.S. Agarwal**  
Chairman



*By Building Leaders,  
We Build The Nation.*

## Chairman's Message

Bansal Institute of Engineering and Technology has consistently remained at the forefront of recognizing industry requirements and seamlessly integrating academic knowledge with professional expertise. Today, the Institute stands among the leading institutions of higher education, distinguished by the excellence of its infrastructure, the competence of its students, and the accomplishments of its alumni. With a strong team of dedicated faculty members who continuously strive to expand the frontiers of knowledge, the Institute fosters a progressive and future-oriented approach, aligned with the rapidly evolving global professional landscape.

Our primary commitment is to identify and nurture the inherent potential of each student, equipping them with the skills, knowledge, and values necessary to excel in their chosen fields. This is achieved through our relentless pursuit of academic excellence and our continuous efforts to enhance the quality of education.

We firmly believe that by developing individuals, we contribute to the growth of society, and by shaping leaders, we strengthen the technological and economic foundation of the nation. Technical education, therefore, is not merely a means of personal advancement but a significant service to the nation.

It is indeed a matter of great privilege and honor to lead such a progressive institution. I am confident that the information presented in the following pages will assist you in making the right academic choices. We warmly welcome you to Bansal Institute of Engineering and Technology, where we are committed to shaping your future, transforming your aspirations into achievements, and preparing you to confidently face the challenges ahead.



**Prof. (Dr.) S.K. Agrawal**  
Director



BE (Electronics) NIT Surat, ME (C&I) MNNIT Allahabad  
MBA (Operations Management), Ph.D. (Control System)  
Fellow Member IETE, IE(I)  
Life Member ISTE, LMA  
Member- IEEE, CSI

## Director's Message

It gives me immense pleasure, on behalf of the entire campus community of Bansal Institute of Engineering and Technology, Lucknow, to extend a warm welcome to all the new entrants to our institution. With a legacy of over 18 years, the Institute has steadily evolved to attain a distinctive position of pride within the technical education landscape of the region. It has played a significant role in laying a strong foundation for modern engineering education and promoting the effective application of engineering practices in the nation's infrastructure development. At BIET, the pursuit of technological excellence in a highly competitive environment remains our defining benchmark.

Bansal Institute of Engineering and Technology is proud of its strong and vibrant alumni network, which has made noteworthy contributions to nation-building over the years. Our alumni have excelled across diverse fields at both national and international levels, bringing recognition and honor to themselves as well as to their alma mater. The Institute takes immense pride in their accomplishments.

Beyond academics, we place equal emphasis on the holistic development of our students. Co-curricular activities, sports, cultural events, adventure initiatives, and social service programs form an integral part of campus life. This commitment is reflected in the wide range of facilities and opportunities available within our campus, designed to nurture well-rounded individuals.

I warmly welcome the newly admitted students to the portals of this esteemed institution and wish them a memorable, meaningful, and rewarding academic journey. I am confident that they will grow into competent professionals—engineers and managers of global standards—and, more importantly, responsible citizens and compassionate human beings.

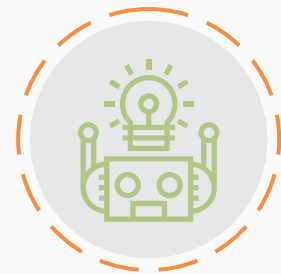
I also extend a hearty welcome to our senior students as they return for the new academic session with renewed enthusiasm and dedication. Furthermore, I welcome the parents of our students—both freshers and seniors—as well as all visitors, and invite them to experience our beautiful and expansive campus.

# COURSES Offered



## B.Tech. (4 years)

- Computer Science and Engineering
- Computer Science and Engineering (Artificial Intelligence)
- Computer Science and Engineering (Artificial Intelligence & Machine Learning)
- Information Technology
- Bio-Technology
- Electrical Engineering
- Mechanical Engineering
- Civil Engineering
- Electronics & Communication Engineering



## M.Tech. (2 years)

- Computer Science and Engineering



## M.B.A. (2 years)

- Human Resource
- Marketing
- Financial Management
- Information Technology
- International Business
- Operations Management



## B.Tech.

### COMPULSORY

- Physics
- Mathematics

### CHOICE

- Chemistry
- Bio Technology
- Biology
- Technical Vocational Subject

## B.Tech. (Bio-Technology)

### COMPULSORY

- Physics
- Mathematics / Biology

### CHOICE

- Chemistry
- Bio Technology
- Technical Vocational Subject

## Direct Admission to First Year B. Tech. / Bio-tech

Student must have clearly passed intermediate examination of U.P. Board or 10+2 level examination or its equivalent from any recognized Board / University and secured minimum 45% marks (40% marks for SC/ST Category candidates) in required subject combination (2 compulsory & 1 optional taken together).

Direct Admission to Second Year for Engineering Diploma Holder & B.Sc Graduates

Candidates who have passed three years Engg. Diploma in any branch of engineering except Agriculture Engineering from any recognized Institution by the Board of Technical Education, U.P. with minimum 45% marks (40% for SC/ST) in aggregate are eligible for admission to second year in any branch of engineering. Candidates who have passed three years B.Sc. degree from any recognized University and passed XII standard with mathematics as one of the subject; securing minimum 45% marks (40% for SC/ST) in aggregate, are also eligible for admission to second year in any branch of Engineering & Technology.

Eligibility Criteria for **M.Tech.** (2 years)

Candidates should have passed B. Tech/BE/MCA or equivalent degree with minimum 50% marks (45% for SC/ST) from any recognized institution/university.

Eligibility Criteria for **M.B.A.** (2 years)

For admission in MBA 1st year, a candidate must have passed minimum three years Bachelor degree course from any recognised University; securing minimum 50% (45% for SC/ST) marks in aggregate.

Direct admission to **MBA** (2nd year)

Candidate who have passed 4 years graduation programme from any recognised institution with minimum 50% marks (45% for SC/ST category).

AICTE Handbook 2026-27

Admission as per AKTU: 2026 counseling

## DEPARTMENT OF COMPUTER SCIENCE AND ENGINEERING

### M.TECH / B.TECH

The Department of Computer Science and Engineering at Bansal Institute of Engineering and Technology is recognized for its commitment to cutting-edge, research-oriented education and the delivery of state-of-the-art academic programs. The department strives to nurture and empower students to realize their full potential by equipping them with the knowledge and skills required to address the challenges involved in designing and developing advanced computing systems, software solutions, and algorithms.

The department actively fosters strong industry-institute collaboration by identifying emerging areas of mutual interest and engaging in sponsored research projects, consultancy assignments, and knowledge exchange initiatives. This collaborative approach ensures that students remain aligned with current industry practices and technological advancements.

Faculty members and students within the department are engaged in diverse and contemporary research domains, including Data Mining, Cloud Computing, Database Systems, Software Engineering, and Digital Image Processing. These focus areas not only enhance academic depth but also prepare students to contribute effectively to innovation and technological development in the global arena.



#### VISION

To create a center for imparting technical education of national standards to face the current and future challenges of technological development and to serve as a valuable resources for industry and society.

#### MISSION

- To produce quality software engineers by adopting sound teaching and learning process through seminar, quizzes and projects.
- To boost confidence in students through PDP and workshops.
- To build a strong a practical foundation of students to use latest software and simulators.
- To fill up the gap between industry and academic & focus on practical learning and industrial visit.

### LABS

- ❖ Data Structure Using C Lab
- ❖ Digital Logic Design Lab
- ❖ Algorithm Lab
- ❖ Operating System lab
- ❖ Micro Processor Lab
- ❖ Basic Electronics Engineering Lab
- ❖ Web Technology Based Software Engineering Lab
- ❖ Compiler Lab
- ❖ Python Language Programming Lab
- ❖ Artificial Intelligence Lab
- ❖ Project lab
- ❖ Computer Organization Lab
- ❖ Discrete Structure & Logic Lab
- ❖ DBMS Lab
- ❖ Principles of Programming Language Lab



## DEPARTMENT OF INFORMATION TECHNOLOGY

### B.TECH

The Department of Information Technology was established to develop skilled technocrats capable of meeting the challenges of a rapidly evolving technological landscape. The department has emerged as a center of excellence in education, innovation, and research, supported by dedicated faculty, motivated students, and state-of-the-art infrastructure.

The department is accredited by the National Board of Accreditation (NBA), reflecting its commitment to high academic standards and quality education. It also emphasizes training and placement, with students securing promising career opportunities in reputed organizations.

Faculty and students actively engage in research and development, resulting in numerous publications in national and international conferences and journals. The department is also a proud member of the Computer Society of India (CSI), with faculty and students regularly participating in CSI activities, workshops, and technical events to enhance professional skills and industry exposure.



#### VISION

To become a front-runner in preparing graduates to be an efficient problem solvers, technocrats and competent professionals by preparing them for any kind of challenges in the world of Information Technology.

#### MISSION

M1: To prepare our graduates to become excellent in their field through PDP, workshops, seminars and industrial visits.

M2: To maintain state of the art facilities and laboratories where student can enhance their understanding of technology.

M3: To provide an environment for students and faculties for continuous learning, to investigate, apply and transfer knowledge.



### LABS

- ❖ Operating System Lab
- ❖ Algorithm Lab
- ❖ Computer Network Lab
- ❖ Cryptography and Network Security Lab
- ❖ Data Structure Using C Lab
- ❖ Project Lab
- ❖ Web-Technology Lab
- ❖ Computer Organization Lab
- ❖ DBMS Lab
- ❖ Principles of Programming Language Lab
- ❖ Discrete Structure & Logic Lab

## DEPARTMENT OF BIO-TECHNOLOGY ENGINEERING

### B.TECH

The Department of Biotechnology introduces students to the dynamic and rapidly evolving field of biological sciences, aiming to develop competent and motivated engineers and scientists. Supported by highly qualified and experienced faculty from diverse specializations, the department provides a strong foundation in both academics and research.

The department is accredited by the National Board of Accreditation (NBA), reflecting its commitment to high academic standards and quality education. It focuses on key areas such as Biochemical Engineering, Tissue Engineering, Plant Biotechnology, and Nanobiotechnology, while actively developing advanced research facilities in emerging domains.

Aligned with the needs of biotechnology-based industries, the department prepares students to meet professional and industrial demands effectively. It is a member of the Biotech Research Society, India, and actively organizes society activities, workshops, and events, with faculty and students participating enthusiastically to enhance research exposure and professional development.



#### VISION

To become a leading department in the country by imparting exceptional education and providing an excellent environment to future biotechnologists with knowledge and academic excellence thereby gaining a competitive edge in the professional world.

#### MISSION

M1: To provide Biotechnology based educational program with the impetus to generate a quality workforce.

M2: To create awareness about the potentials of Biotechnology with socio-ethical implications.

M3: To develop trained biotechnological professionals who can contribute to the continuous improvement of biotechnological services and products.



### LABS

- ❖ Bio-Chemistry Lab
- ❖ Micro Biology Lab
- ❖ Immunology Lab
- ❖ Genetic & Molecular Biology Lab
- ❖ Bio Informatics Lab
- ❖ Bio Process Engineering Lab
- ❖ Enzyme Engineering Lab
- ❖ Genetic Engineering Lab
- ❖ Fermentation Biotechnology Lab
- ❖ Nano Biotechnology Lab
- ❖ Plant Biotechnology Lab
- ❖ Food Biotechnology Lab

## DEPARTMENT OF ELECTRICAL ENGINEERING B.TECH



Electrical Engineering, a core discipline of engineering, plays a vital role in modern industries and infrastructure. It equips students with knowledge of the generation, transmission, and distribution of electrical power, as well as instrumentation, control systems, and electrical and electronic networks. Graduates find promising opportunities in manufacturing units, power corporations, hydroelectric sectors, and both public and private enterprises.

The Department of Electrical Engineering at Bansal Institute was established by a team of highly experienced faculty members, many of whom hold degrees from premier institutions such as IITs and NITs. With well-structured laboratories and dedicated faculty, the department provides comprehensive learning from fundamental concepts to industrial applications.

The department is accredited by the National Board of Accreditation (NBA), New Delhi, reflecting its commitment to excellence in technical education. Faculty and students actively engage in cutting-edge research, with publications in reputed journals and several patents to their credit. The department is affiliated with professional bodies such as IEEE Power Electronics Society, IEEE Power & Energy Society, IEEE Women in Engineering and IEEE Robotics and automation society and regularly organizes industrial visits, technical talks, skill development programs, and co-curricular activities to enhance students' professional competence.



### VISION

To emerge as a centre of technical excellence in the field of electrical engineering to mould the students into technocrats to fulfill the requirements of industry and society

### MISSION

M1: To provide quality and practical education in the field of Electrical Engineering.

M2: Build technically skilled Engineers with moral and ethical values to meet the current and future requirements of industry, research, and entrepreneurs.

M3: Provide a strong and positive learning environment and inculcate them to work in multi-disciplinary domains for sustainable solutions.

### LABS

- ❖ Electrical Measurement Lab
- ❖ Electrical Instrumentation Lab
- ❖ Power Electronics Lab
- ❖ Control system Lab
- ❖ Power System Lab
- ❖ Analog & Electronics Lab
- ❖ Electrical Lab
- ❖ Electrical Machine Lab
- ❖ Digital Electronics Lab
- ❖ Industrial Automation and PLC Lab
- ❖ Microprocessor Lab
- ❖ Electrical Design and Fabrication Lab
- ❖ Solar Lab
- ❖ Plc Lab
- ❖ Centre Of Excellence In PLC & SCADA
- ❖ Centre Of Excellence In VFD & HMI



## DEPARTMENT OF MECHANICAL ENGINEERING B.TECH

Mechanical Engineering is a core branch of engineering that plays a key role in global development. Its principles are applied in the design, analysis, development, and managerial control of a wide range of physical systems and devices, including transport, manufacturing, and advanced technologies such as nanotechnology.

The Department of Mechanical Engineering at Bansal Institute is distinguished by its spacious workshops and well-equipped laboratories. Experienced and dedicated faculty members focus on delivering quality education through structured lectures, tutorials, and practical sessions, ensuring students gain both theoretical knowledge and hands-on skills.



### VISION

To create quality manpower equipped with technical skills, Social values, Leadership, Creativity and Renovation for the benefits and betterment of mankind and sustainable development of the nation.

### MISSION

M1: To provide best education in mechanical engineering to generate quality workforce.

M2: To create awareness about potentials of mechanical engineering with socio-ethical implications.

M3: To develop trained mechanical engineering professionals who can contribute in continuous improvement of mechanical engineering design and products.

M4: To impart quality to the students and enhance their skills which will make them globally competitive.



### LABS

- ❖ Fluid Mechanics Lab
- ❖ Manufacturing Process Lab
- ❖ Heat and Mass Transfer Lab
- ❖ Fluid Machinery Lab
- ❖ Theory of Machines Lab
- ❖ Material Testing Lab
- ❖ Refrigeration and Air-Conditioning Lab
- ❖ Workshop Practice
- ❖ Strength of material Lab
- ❖ Computer aided Machine Drawing Lab
- ❖ Applied Thermodynamics Lab
- ❖ IC engine & Automobile Lab
- ❖ Engineering & Mechanics Lab
- ❖ Measurement & Metrology Lab

## DEPARTMENT OF CIVIL ENGINEERING

### B.TECH

Civil Engineering offers students a rewarding career, combining professional growth with opportunities to serve the community. The field encompasses a wide range of specialized areas, including Structural Engineering, Construction, Geotechnical Engineering, Water Resources, and Transportation. Civil engineers may also pursue roles in design, research, teaching, or supervisory and administrative positions.

At Bansal Institute, the Department of Civil Engineering provides comprehensive programs that prepare graduates for professional excellence while emphasizing their responsibility to contribute positively to society. Students receive personal attention and guidance from experienced faculty to develop strong engineering skills and adapt to evolving social expectations.



#### VISION

To become a department of excellence that churns out civil engineers with technical competencies and abilities to meet the current and future challenges in civil engineering.

#### MISSION

M1: Developing an ability to use techniques, skills and modern engineering practices with the help of accessible software lab system.

M2: Providing students a good opportunity to gain full awareness about industrial practices by organizing industrial visit for students.

M3: Making students employable through application of knowledge and by conducting seminar.

### LABS

- ❖ Surveying Lab
- ❖ Building, Planning & Drawing Lab
- ❖ Hydraulics and Machine Lab
- ❖ CAD Lab
- ❖ Environment Engineering Lab
- ❖ Fluid Mechanics Lab
- ❖ Solid Mechanics Lab
- ❖ Engineering Graphics and Design Lab
- ❖ Material Testing lab
- ❖ Construction Management Lab
- ❖ Concrete Lab
- ❖ Transportation Engineering Lab
- ❖ Structural Detailing Lab

## DEPARTMENT OF ELECTRONICS & COMMUNICATION ENGINEERING

### B.TECH

Electronics and Communication Engineering is a transformative branch of engineering that has revolutionized modern life and driven the transition to a smart technological society. Its applications span radio, television, telecommunication, computers, automobiles, office machinery, home appliances, medical equipment, and space technologies. Communication systems, including cellular networks, have created vast opportunities in the communication and navigation industries.

The department is equipped with modern laboratories, providing students with practical exposure alongside theoretical knowledge. Hands-on learning is further enhanced through workshops on embedded technologies and competitions such as RoboWars and RoboRace, which keep students updated on the latest developments and challenges in the field.

Faculty members possess postgraduate and doctoral qualifications, with many having graduated from premier institutions such as IITs and NITs. They bring extensive teaching and research experience, with numerous publications in reputed national and international journals.



#### VISION

To offer technical Education in the field of Electronics and Communication Engineering for producing Engineers and Technocrats who stay tune with the advance technological revolution and motivated to serve the nation through innovation.

#### MISSION

1. To provide theoretical and practical electronics & communication skills which are currently in demand which would make them successful engineers.

2. To create awareness amongst the students towards the industry challenges by organizing lecture from the industry expert.

3. To upgrade the teaching standards through continuous efforts toward improvement of the knowledge and expertise of the teachers.

### LABS

- ❖ Basic Electronics Engineering Lab
- ❖ Integrated circuits Lab
- ❖ Control System Lab
- ❖ Communication Engineering Lab
- ❖ CAD of Electronics Lab
- ❖ DSP Lab
- ❖ Micro Controller for Embedded System Lab
- ❖ Electronics Device Lab
- ❖ Digital System Design Lab
- ❖ Network analysis & Synthesis Lab
- ❖ Analog Circuit Lab
- ❖ Signal System Lab
- ❖ Communication Lab
- ❖ Microwave Engineering Lab

## DEPARTMENT OF COMPUTER SCIENCE & ENGINEERING (ARTIFICIAL INTELLIGENCE AND MACHINE LEARNING)



### B.TECH

The Department of Artificial Intelligence & Machine Learning is dedicated to providing high-quality technical education through experiential learning, supported by state-of-the-art infrastructure, experienced faculty, and a vibrant student community.

To promote lifelong learning and practical application of knowledge, the department organizes hackathons, coding competitions, workshops, seminars, and training programs. Students gain hands-on experience through industry visits, real-time projects, and technical talks in collaboration with leading organizations, developing strong technical, problem-solving, and interpersonal skills.

The department strives to produce industry-ready graduates with a holistic personality, fully equipped to tackle real-world challenges and make meaningful contributions to the rapidly evolving field of Artificial Intelligence and Machine Learning.



### LABS

#### of Computer Science & Engineering (Artificial Intelligence & Machine Learning)

- ❖ Data Structures Using C Lab
- ❖ Computer Organization Lab
- ❖ Discrete Structure & Logic Lab
- ❖ Operating Systems Lab
- ❖ Microprocessor Lab
- ❖ Python Language Programming Lab
- ❖ Database Management System Lab
- ❖ Artificial Intelligence Lab
- ❖ Design and Analysis of Algorithm Lab
- ❖ Machine learning Lab
- ❖ Web Technology Lab
- ❖ Computer Networks Lab
- ❖ Principles of Programming Language Lab



## DEPARTMENT OF COMPUTER SCIENCE & ENGINEERING (ARTIFICIAL INTELLIGENCE)

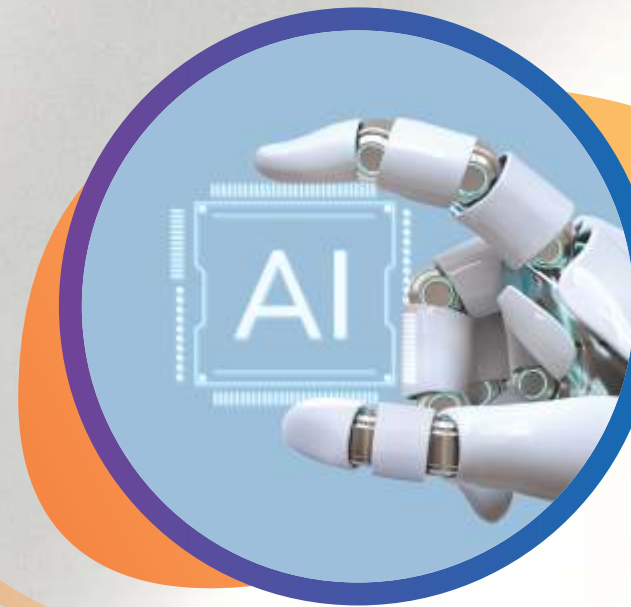


### B.TECH

The Department of Artificial Intelligence focuses on developing systems that demonstrate human-like cognitive abilities, including perception, learning, communication, reasoning, decision-making, and action in physical and social environments. One of the key objectives of the department is to promote interdisciplinary research and development in AI and its allied fields, including Machine Learning, Data Analytics, and Natural Language Processing.

The department is supported by faculty with extensive expertise and strong academic and research credentials. It offers a B.Tech program in Artificial Intelligence designed to equip students with contemporary technical knowledge, enabling them to provide innovative and practical solutions.

The department aims to produce skilled professionals capable of addressing real-world challenges and meeting the demands of industries such as Engineering, Healthcare, Finance, and R&D.



### LABS

#### of Computer Science & Engineering (AI)

- ❖ Data Structures Using C Lab
- ❖ Computer Organization Lab
- ❖ Discrete Structure & Logic Lab
- ❖ Operating Systems Lab
- ❖ Microprocessor Lab
- ❖ Python Language Programming Lab
- ❖ Database Management System Lab
- ❖ Artificial Intelligence Lab
- ❖ Design and Analysis of Algorithm Lab
- ❖ Machine Learning Lab
- ❖ Web Technology Lab
- ❖ Computer Networks Lab
- ❖ Principles of Programming Language Lab



## APPLIED SCIENCE & HUMANITIES DEPARTMENT

The Department of Applied Science and Humanities at BIET is dedicated to providing a strong foundation in the theoretical and practical aspects of applied sciences, forming the cornerstone of engineering education. By focusing on Physics, Chemistry, Mathematics, and English, the department ensures that first-year students develop a clear understanding of fundamental concepts, enabling them to excel in their respective engineering streams.

The department emphasizes the development of innovative thinking and effective communication skills through regular seminars, group discussions, and debates.

Equipped with well-structured laboratories for Physics, Chemistry, and Professional Communication, the department consistently delivers excellent academic results while preparing students to become competent and confident future technocrats.



### VISION

To nurture and inculcate knowledge and understanding of applied science and groom the students with social, ethical and moral values so that the budding technocrats can expedite their professional growth and become globally acceptable technical professionals.

### MISSION

M1: To offer a complete understanding of applied sciences so that the scientific knowledge imparted to students empowers their technical skills.

M2: To empower the students with language competence through apt mentoring, developing values, skills and positive attitude and helping them climb the ladder of success.

M3: To provide unique learning environment for the students.



## LABS

- ❖ Graphics Lab
- ❖ Language Lab
- ❖ Workshop
- ❖ Computer Lab
- ❖ Electronic Engg. Lab
- ❖ Electrical Engg. Lab
- ❖ English Language Lab
- ❖ Workshop Lab

## DEPARTMENT OF MANAGEMENT STUDIES

### MBA

The Department of Management Studies offers a two-year postgraduate program in Business Administration with specializations in Operations Management, Marketing, Finance, International Business, Human Resource Management, and Information Technology. The program is designed to impart knowledge, develop analytical skills, and foster a socially responsible outlook in students.

With a blend of highly qualified and experienced faculty, the department emphasizes holistic personality development through interactive sessions with industry leaders, seminars, conferences, industrial visits, and case study-based learning.

The department's mission is to nurture future managers equipped with the right knowledge, attitude, and skills, preparing them to excel as corporate leaders in a dynamic business environment.



### VISION

To consistently make efforts for maintaining excellence in management education by fabricating – skilled, trained and knowledge driven individuals who can address industry and societies present and future needs.

### MISSION

To focus on overall development of students i.e. brain power (hard skills) as well as heart power (soft skills) development to enhance their employability and entrepreneurial skills.

To be scholars centered institute assimilating lifelong learning and problem solving attitude by fostering technical capabilities.

To develop in students interpersonal skills, communication skills, professional and societal ethical values, leadership qualities, reasoning and analytical skills.

Encourage Entrepreneurship and Service Management Capabilities.



## LABS

- ❖ Verbal Communication Lab
- ❖ Skills Development Lab
- ❖ Corporate Practice Lab
- ❖ Business Model Building



# STUDENT'S ACADEMIC SUPPORT SCHOLARSHIP

❖ To Encourage academic excellence of students, the institute provides scholarship to meritorious students on the basis of performance of the students during an academic year.

❖ Along with our endeavors to support & promote students towards better education, we also provide financial support extended by the Government of Uttar Pradesh. All details about the government scheme for scholarship can be obtained from the below link:-

<http://www.scholarship.up.nic.in>

<http://www.scholarship.gov.in>

<http://www.aicte-jk-scholarship-gov.in>

<http://www.scstwelfare.bih.nic.in>

<http://www.beebcwelfare.bih.nic.in>

<https://www.7nishchay-yuvaupmission.bihar.gov.in/>



1<sup>st</sup>

Position

Student obtaining 1st position in AKTU will be reimbursed with the full tuition fees for the year and a Certificate of recognition is awarded to the student.

10<sup>th</sup>

Position

Student securing up to 10th position in AKTU is reimbursed with one Semester tuition fees and a Certificate of recognition is awarded to the student.

75%

Marks

Student obtaining more than 75% marks in theory papers of end term examination without PCP/PWG is awarded Prize and a certificate of recognition.

95%

Attendance

Student attending highest number of classes (more than 95%) is awarded Prize & Certificate of recognition

Best

Conduct

Student having Best Conduct (Based on Human Values) is awarded Prize & Certificate of recognition



## FACILITIES AND TECHNICAL SUPPORT

### LECTURE ROOMS 41

- Air-conditioned & ICT enabled Classroom
- Well Ventilated & Lit

### TUTORIAL ROOMS 08

- Well Equipped
- Ventilated & Well Lit

### FACULTY ROOMS 12

- Well Furnished
- Spacious
- Maintain a Congenial Environment

### SEMINAR HALLS 02

- PA System
- Air-conditioned
- LCD Projectors

### LABORATORIES 61

- Modern Equipment
- Ventilated & Well Lit

### WORKSHOPS 01

### DRAWING HALLS 02

- Well Equipped
- Ventilated & Well Lit

### CENTRAL LIBRARY & DEPARTMENTAL LIBRARY

- Books titles 4915
- Books volumes 46522
- 28 Print Journals
- 15 Print Magazine
- 1295 E- Journals
- 7000 E- books

Center of Excellences - Various CoEs with Industry Collaboration  
Research Labs - Promoting Research & Development

### HOD ROOMS 10

- Well Furnished
- Spacious

### LANGUAGE LAB 01

- Equipped with Words Worth English Language Software

### EXAM CELL 01

Contains every facility to conduct University Exams

### CAMPUS

- 15 Acres Area
- Eco- friendly
- Lush-Green
- Well-Secured

### STATIONARY SHOP 01

### MEDICAL FACILITIES

- Regular health checkup campus
- Sick Room
- Tie-up with near by Seva Hospital & DP Bora Hospital

### SECURITY ROOMS 01

Training & Placement Cell

### CANTEEN 01

### KIOSKS 01

- Pure Vegetarian & hygienic food & Fast food is available

### COMMON ROOMS 02

- Chess
- Carrom
- Table Tennis

### CCTV CAMERAS 70

- Computer Lab
- Admin blocks
- Entrance & Hostels

### INTERNET FACILITIES

- Wi-Fi-Enabled Campus
- 200 Mbps leased Line

### SPORTS FACILITY

- Indoor (Chess, Carrom, Table Tennis)
- Outdoor (Football, Cricket, Volleyball, Basket ball, Badminton)

### POWER SUPPORT & BACKUP

- 630 KVA Transformer
- 200 KW Solar Generation Plant
- 320 KVA, 125KVA, 83KVA Generator Backup

### HOSTEL FACILITY

- For Boys - 424 Beds
- For Girls - 132 Beds
- Total Capacity - 556

### AUDITORIUM

500 Seating Capacity

## EDUCATIONAL AND INDUSTRIAL TOURS



## LIBRARY

Library is the backbone of any civilized society and heart of any academic institution. Thus the Library also acquires a prominent place among the students and faculty. The library at Bansal, is fully automated and air conditioned with a collection of over 46,000 books of engineering as well as management studies. We are the member of DELNET which provides more than 1200 journals in the different fields of Engineering and Sciences. Library at Bansal has well furnished reading rooms with the seating capacity of more than 200 users and has a very rich collection of reference books and journals. Keeping in view the fast changes in technology, the knowledge base of the library is updated regularly by way of adding new literature in the form of text books, reference books, reports, proceedings, abstracts & indexes, encyclopedias, data books, standards (national & international), journals.



## CLASS ROOM

The air-conditioned classrooms at Bansal provides the most conducive environment for dynamic and focused learning and teaching. They are designed in such a manner so as to facilitate customized attention to each student. The lecture rooms are equipped with whiteboard & LCD Projector and Audio Visual systems for effective learning.



## CAFETERIA & FOOD COURT

The Cafeteria & Mess serves the best quality of snacks & food. The delicacies are full of essential nutrition and students relish their taste. Keeping in view the financial limitations of the students, food is served at a very economical price.



*The highest education is that which does not merely give us information but makes our life in harmony with all existence.*

*- Rabindranath Tagore*

## ❖ HOSTEL

The Hostel at Bansal is situated inside the Campus separately for Girls and Boys. Students are given accommodations on first come first serve basis. Hostel is equipped with a common room, dining hall and modern kitchen, infirmary and specialized medical facility and indoor and outdoor sports facilities. In boy's hostel there is a facility of 424 beds and girls hostel has 132 beds. AC rooms for both boys and girls are available.



## ❖ HOSPITAL & MEDICAL FACILITY

We have a tie up with a Hospital to render Medical facilities in the campus at any time. All appropriate first Aid medical services are available in the college premises.

**SEWA HOSPITAL & RESEARCH CENTRE  
BORA SUPER SPECIALITY HOSPITAL**



## Playground ❖

As we all know that "All work and no play makes jack a dull Boy." A sedentary life style and spending long hours of engineering studies will deteriorate a healthy body. Our beautiful playground for cricket, volleyball, badminton etc, with all upgraded amenities gives space to students to flex their muscles and stretch their limbs to uplift their sinking moods and spirits



## SEMINAR HALL & CONFERENCE ROOM

The Institute has a well-equipped air conditioned Seminar Hall with a capacity of 200 people for conducting different programs. We have fully air conditioned and spacious conference hall which has a seating capacity of 60 people with complete audio visual systems.



## AWARDS AND RECOGNITIONS



# Srijan 2026



# WORKSHOPS & SEMINARS

The seminar committee acknowledges the students' zeal for learning from the experts of the corporate world and thus, arranges workshops and seminars from time to time. The eminent personalities are invited to the campus to share their knowledge with the student and in a way guide the student to learn from their knowledge and experiences.



# CORPORATE PLACEMENTS & TRAINING

The Training & Placement office facilitates the process of placement of students passing out from the Institute besides collaborating with leading organizations and institutes in setting up of internship and training program of students. The office liaises with various industrial establishments, corporate houses etc which conduct campus interviews and select graduate and post-graduate students




The placement activities are carried on throughout the year. Pre-Placement Talks are also conducted in this regard as per mutual convenience. Job offers, dates of interviews, selection of candidates etc. are announced through the Training & Placement Office.

The Placement Office is assisted by a committee comprising representatives of students from the undergraduate and post-graduate engineering streams. The committee evolves a broad policy framework every year besides a set of rules which are inviolable. Student members are closely co-opted in implementing these policy decisions.



# Placement Highlights 2025-2026

## PLACEMENTS (2025-26)

### BANSAL INSTITUTE OF ENGINEERING & TECHNOLOGY, LUCKNOW

Sr. No.	Student Name	Branch	Company
1	Anamika Chaudhary	Civil	NCC Ltd.
2	Abhay Chaurasia	Civil	Megha Engineering and Infrastructure Limited
3	Abhinav Awasthi	EC	Etricals Engineers Pvt. Ltd.
4	Abhinav Awasthi	Electrical	ADVIK AUTOCOMP
5	Abhishek Kushwaha	IT	Logic Pro
6	Abhshek Dixit	AIML	Planet Spark
7	Aditya Jaiswal	Mechanical	Solar square Energy Pvt. Ltd.
8	ADITYA JAISWAL	Mechanical	ADVIK AUTOCOMP
9	Aditya Rai	CSE	Logic Pro
10	Akash Gaud	Electrical	ADVIK AUTOCOMP
11	Alok Yadav	Mechanical	Solar square Energy Pvt. Ltd.
12	Aman Singh	Mechanical	Technical Associates Transformers Limited
13	Aman Verma	Electrical	Solar square Energy Pvt. Ltd.
14	AMIT Kumar	Mechanical	ADVIK AUTOCOMP
15	Amit Kumar Mishra	Civil	Megha Engineering and Infrastructure Limited
16	Amitesh Tripathi	Civil	Shobha Ltd.
17	Anil Kumar Bharti	Mechanical	ADVIK AUTOCOMP
18	Animesh kumar Gupta	Mechanical	PTC Industries Ltd.
19	Anish Kumar Yadav	Electrical	Technical Associates Transformers Limited
20	Anoop gupta	Electrical	Solar square Energy Pvt. Ltd.
21	Anoop Tiwari	Mechanical	PTC Industries Ltd.
22	Anshu Yadav	Mechanical	Technical Associates Transformers Limited
23	Anshu yadav	Mechanical	ADVIK AUTOCOMP
24	Anuj Tiwari	Civil	Shobha Ltd.
25	Anuj Tiwari	Civil	Megha Engineering and Infrastructure Limited
26	Anup Gupta	EE	Etricals Engineers Pvt. Ltd.
27	Anurag Dixit	Electrical	Technical Associates Transformers Limited
28	Anurag Dixit	Electrical	Solar square Energy Pvt. Ltd.
29	Anuraj Singh	Civil	Shobha Ltd.
30	Anuraj Singh	Civil	Megha Engineering and Infrastructure Limited
31	Arsalan	Civil	Shobha Ltd.
32	Arsalan	Civil	Megha Engineering and Infrastructure Limited
33	Arun Chaudhary	Mechanical	Technical Associates Transformers Limited
34	Ashish Kuma	MBA	TATA Motors
35	Ashish Mishra	Electrical	Technical Associates Transformers Limited
36	Ayush Baipai	EC	Etricals Engineers Pvt. Ltd.
37	Brijesh Yadav	Electrical	ADVIK AUTOCOMP
38	Dheeraj Gupta	Civil	Megha Engineering and Infrastructure Limited
39	Dinesh Kumar	Civil	Megha Engineering and Infrastructure Limited
40	Dipanshu Gupta	EC	Etricals Engineers Pvt. Ltd.
41	Dipanshu Pandey	Civil	Megha Engineering and Infrastructure Limited
42	Dipchand chauhan	Electrical	ADVIK AUTOCOMP
43	Divyanshu Shukla	Mechanical	Technical Associates Transformers Limited
44	Gaurav Rai	EE	Etricals Engineers Pvt. Ltd.
45	Gaurav Rai	Electrical	ADVIK AUTOCOMP
46	Gopal Raj	Mechanical	Technical Associates Transformers Limited
46	Gopal raj	Mechanical	ADVIK AUTOCOMP
47	Hari Shankar	MBA	TATA Motors
48	Jainenda Singh	Civil	Megha Engineering and Infrastructure Limited
49	Kaif Siddique	Mechanical	Technical Associates Transformers Limited

Sr. No.	Student Name	Branch	Company
50	Katyani Mishra	CSE	Arcstream Technologies Pvt. Ltd.
51	Lalbabu Ram	Mechanical	ADVIK AUTOCOMP
52	Mahima	MBA	TATA Motors
53	Md Zeeshan	Civil	Megha Engineering and Infrastructure Limited
54	Mehfooz Khan	EE	Etricals Engineers Pvt. Ltd.
55	Navnit Pal	Mechanical	PTC Industries Ltd.
56	Neelu Pandey	IT	Logic Pro
57	Neelu Pandey	IT	AKANA Technologies Pvt. Ltd.
58	Nitin Verma	Civil	Megha Engineering and Infrastructure Limited
59	Nitish Sharma	Mechanical	ADVIK AUTOCOMP
60	Nitish sharma	Mechanical	PTC Industries Ltd.
61	Pranjul Mishra	Mechanical	Technical Associates Transformers Limited
62	Priyanshu shukla	Electrical	ADVIK AUTOCOMP
63	Rahul Kumar	Mechanical	Technical Associates Transformers Limited
64	Rahul Kumar	Mechanical	ADVIK AUTOCOMP
65	Rahul Yadav	Electrical	ADVIK AUTOCOMP
66	Ramjee Gupta	Electrical	Technical Associates Transformers Limited
67	Ramjee Gupta	Electrical	ADVIK AUTOCOMP
68	Ratnesh Kumar	Civil	Megha Engineering and Infrastructure Limited
69	Ravindra vishwakarama	Mechanical	ADVIK AUTOCOMP
70	Ravindra vishwakarama	Mechanical	Solar square Energy Pvt. Ltd.
71	Rohit	Civil	Shobha Ltd.
72	Rohit	Civil	Megha Engineering and Infrastructure Limited
73	Rohit Kumar	Electrical	ADVIK AUTOCOMP
74	Sagar bharti	Mechanical	ADVIK AUTOCOMP
75	Sanjay	Electrical	Solar square Energy Pvt. Ltd.
76	Sanya Srivastava	AI	Alforra Tech
77	Shailesh Gautam	Electrical	ADVIK AUTOCOMP
78	Shambhavi Singh	AI	Planet Spark
79	Shambhavi Singh	IT	AKANA Technologies Pvt. Ltd.
80	Shivam Singh	Civil	Megha Engineering and Infrastructure Limited
80	Shubham Yadav	AI	Kitter
81	Siddhant Singh	Mechanical	Technical Associates Transformers Limited
82	Siddhartha Sankrit	Electrical	ADVIK AUTOCOMP
83	Sneha	IT	Logic Pro
84	Suhel	Civil	Shobha Ltd.
85	Suhel	Civil	Megha Engineering and Infrastructure Limited
86	Sumit Yadav	EE	Etricals Engineers Pvt. Ltd.
87	Suraj Nishad	Mechanical	ADVIK AUTOCOMP
88	Tunnoo kumar Gupta	Mechanical	ADVIK AUTOCOMP
89	Tushar Mishra	CSE	Logic Pro
90	Utkarsh Upadhyay	CSE	ARACHHILLSOFTWARE SOLUTION
91	Varsha Gautam	CSE	Logic Pro
92	Vikas Chaurasiya	Mechanical	Aerolloy Technologies Ltd.
93	Vikas Yadav	Mechanical	Technical Associates Transformers Limited
94	Vikash kushwaha	Electrical	ADVIK AUTOCOMP
95	Vinay Chauhan	EE	Etricals Engineers Pvt. Ltd.
96	Vishal Yadav	Electrical	Technical Associates Transformers Limited
97	Vishal Yadav	Electrical	ADVIK AUTOCOMP
98	Vivek Kumar Singh	Civil	Megha Engineering and Infrastructure Limited

**RIYA SINGH, IT**  
AKANA Technologies Pvt. Ltd.  
Business Analyst

**ARSALAN, CE**  
Shobha Ltd.  
Trainee Engineer

**VARSHA GUPTA, IT**  
Logic Pro Infosystem  
Software Developer

**AMAN SINGH, ME**  
Advik Autocomp  
Training Engg

**LALBABU RAM, ME**  
Advik Autocomp  
Training Engg

**VIKASH YADAV, ME**  
Advik Autocomp  
Training Engg

**ANSHU YADAV, ME**  
Advik Autocomp  
Training Engg

**RAHUL KUMAR, ME**  
Advik Autocomp  
Training Engg

**ROHIT, CE**  
Shobha Ltd.  
Trainee Engineer

**AMITESH TRIPATHI, CE**  
Shobha Ltd.  
Trainee Engineer

**SUHEL KHAAN, CE**  
Shobha Ltd.  
Trainee Engineer

**ANKUR KR. SINGH, AIML**  
Planet Spark  
Business Development Counsellor

**ABHISHEK DIXIT, AIML**  
Planet Spark  
Business Development Counsellor

**ABHINAV AWASTHI, EE**  
Etricals Engineers Pvt. Ltd.  
Trainee Engg.

**VIKAS CHAURASIYA, ME**  
PTC Industries Ltd.  
Mechanical Engineer

**ABHISHEK VISHWAKARMA, ME**  
Advik Autocomp  
Training Engg

**AMIT KUMAR, ME**  
Advik Autocomp  
Training Engg

**UTKARSH UPADHYAY, CSE**  
Logic Pro Infosystem  
Software Developer

**SANYA SRIVASTAVA, AI**  
Alforra Tech  
Steam Trainer

**VARSHA GAUTAM, CSE**  
Logic Pro Infosystem  
Software Developer

**RAHUL YADAV, EE**  
ADVIK AUTOCOMP  
Training Engg

**ADITYA RAI, CSE**  
Logic Pro Infosystem  
Software Developer

**Vikash kushwaha, EE**  
Advik Autocomp  
Training Engg

**ABHISHEK KUSHWAHA, IT**  
Logic Pro Infosystem  
Software Developer

**SIDDHANT SINGH, IT**  
Planet Spark  
Business Development Counsellor

**NAVINIT PAL, ME**  
PTC Industries Ltd.  
Mechanical Engineer

**DIPANSHU GUPTA, EC**  
Etricals Engineers Pvt. Ltd.  
Application Engineer

**SHAMBHAVI SINGH, IT**  
Planet Spark  
Business Development Counsellor

**SAGAR BHARTI, ME**  
Advik Autocomp  
Training Engg

**ANOOP TIWARI, ME**  
PTC Industries Ltd.  
Mechanical Engineer

**ADITYA JAISWAL, ME**  
Advik Autocomp  
Training Engg

**ANSHU YADAV, ME**  
Advik Autocomp  
Training Engg

**RAVINDRA VISHWAKARMA, ME**  
Advik Autocomp  
Training Engg

**SURAJ NISHAD, ME**  
Advik Autocomp  
Training Engg

**TUSHAR MISHRA, CSE**  
Logic Pro Infosystem  
Software Developer

**NEELU PANDEY, IT**  
AKANA Technologies Pvt. Ltd.  
Business Analyst

## Academic Achievers

Sr. No.	Student Name	Year	Roll No.	Branch	%
1	MO SAHIL	1	2404221530041	AIML	93.50
2	SIMRAN CHAURASIYA	4	2204220109034	CSE	91.5
3	LAXMAN	1	2404221520031	CS-AI	90.78
4	NIDHI YADAV	1	2404221520038	CS-AI	89.11
5	TANMAY CHAURASIYA	1	2404220100209	CSE	89
6	SHREY KAPOOR	1	2404221530063	AIML	88.50
7	SATYAM DUBEY	1	2404220130056	IT	87.06
8	ANKIT MAURYA	1	2404221520011	CS-AI	86.89
9	ATHARV MAURYA	1	2404221530020	AIML	86.89
10	ARPITA SINGH	1	2404220100052	CSE	86
11	MOHD AZAD	1	2404221530042	AIML	85.94
12	RAVIHAS PASWAN	1	2404220100167	CSE	86
13	SHUBH KASHYAP	1	2404220100200	CSE	86
14	RISHIKA YADAV	1	2404220200033	EE	85.39
15	RUPA CHAUHAN	3	2204220310008	ECE	85.4
16	SITAL VERMA	1	2404220200040	EE	85.33
17	ALOK KUMAR YADAV	4	2104220100015	CSE	85.1
18	TUSHAR MISHRA	3	2204220100118	CSE	85.1
19	SHAMBHAVI SINGH	3	2204220130051	IT	85
20	SHASHI AGRAWAL	1	2404220100190	CSE	85
21	LALITA SINGH	2	2304220310008	ECE	84.8
22	KUMARI SHIVANI MADDHESHIYA	1	2404221530037	AIML	84.56
23	HEENA	1	2404220100089	CSE	84
24	ATUL KUMAR	1	2404220000010	CE	84.33
25	ASHISH MISHRA	3	2204220200015	EE	84.24
26	KULDEEP YADAV	4	2104220200018	EE	84.24
27	Sunil Chaudhary	4	2104220800016	AG	84.15
28	KUMARI NANDINI MADDHESHIYA	1	2404221530036	AIML	84.06
29	Vivek Kumar Singh	3	2204220000023	CE	83.8
30	AASHU SHARMA	1	2404220100002	CSE	84
31	PRIVANSHU PRAJAPATI	1	2404220540076	BT	83.61
32	POOJA VERMA	3	2204220100074	CSE	83.6
33	SHIMPAL KUMARI	1	2404220130059	IT	83.56
34	ADHYA	2	2304220540001	BT	83.5
35	Mridul Gupta	2	2304220100049	BT	83.5
36	ASTHA SINGH	2	2304221520017	AI	83.50
37	RASHMI VARTIKA	4	2104220100080	CSE	83.4
38	PRINCE ASTHANA	2	2304220130040	IT	83
39	AMAN KUMAR RAI	1	2404220100024	CSE	83
40	SANTOSH PRASAD	1	2404220310015	ECE	83.33
41	KHUSHBOO CHAUHAN	1	2404221520026	CS-AI	83.28
42	VIKASH CHANDRA	1	2404220100211	CSE	83
43	NEELU PANDY	3	2204220130035	IT	83
44	ALOK PRASAD	1	2404220100020	CSE	83
45	MOHD AYAN	3	2204220100067	CSE	83
46	HARSH GUPTA	1	2404221520022	CS-AI	83.00
47	Khushi Chaurasia	3	2304220109008	CSE	82.9
48	SURAJ PAL	1	2404220100207	CSE	83
49	KANAK GIHAR	1	2404221530033	AIML	82.83
50	PRASHANT KUMAR SINGH	1	2404221530049	AIML	82.78
51	AKANSHA SHUKLA	3	2204220100014	CSE	82.8
52	RAMJEE GUPTA	3	2204220200025	EE	82.76
53	SALONI RAI	1	2404220540088	BT	82.72
54	SHAGUN RAO	3	2204220310010	ECE	82.7
55	PRANSHU KEDIA	1	2404220100150	CSE	83
56	PRASOON SHUKLA	1	2404220100151	CSE	83
57	SHIVAM GUPTA	1	2404220130061	IT	82.56
58	ROSHAN CHAURASIYA	1	2404221520050	CS-AI	82.56
59	ADITYA GUPTA	2	2304220540002	BT	82.5
60	VARUN DEV MISHRA	1	2404221530068	AIML	82.44
61	ATEEK AHAMAD	1	2404221530019	AIML	82.39
62	BANJESH PANDEY	3	2204220100036	CSE	82.4
63	DIPANSHU GUPTA	3	2304220319008	ECE	82.4
64	ALOK MISHRA	3	2204220130008	IT	82
65	SAURABH RAJPOOT	1	2404220310017	ECE	82.33

Sr. No.	Student Name	Year	Roll No.	Branch	%
66	KRITIKA MISHRA	1	2404220100104	CSE	82
67	ABHISHEK DIXIT	3	2.20422E+12	AIML	82.18
68	SYED RAZI ABBAS	1	2404220130066	IT	82.17
69	GANESH YADAV	1	2404220100083	CSE	82
70	RASHI UMAR	3	2204220130042	IT	82
71	ARK KUMAR PANDEY	1	2404220100049	CSE	82
72	Ashok Kumar Chauhan	3	2204220800004	AG	82.1
73	Nikhil Kr.Mishra	3	2304220809007	AG	82.1
74	MANVI MISHRA	2	2.30422E+12	AIML	82.05
75	PRIYA JAISWAL	3	2204220100082	CSE	82.00
76	ALEEMA FATIMA	1	2404221520007	CS-AI	82.00
77	ADITI SINGH	1	2404221530003	AIML	82.00
78	VIKASH KUMAR	2	2304220100187	CSE	81.95
79	AVANTIKA KUMARI	1	2404220540037	BT	81.94
80	ANUJ MAURYA	3	2204220100028	CSE	81.9
81	AHMAD RAZA	1	2404221530006	AIML	81.89
82	ANSHUL KUMAR OJHA	1	2404221530014	AIML	81.89
83	SAJAL SRIVASTAVA	3	2204220310009	ECE	81.9
84	AMAN VERMA	3	2204220200008	EE	81.88
85	SHIVAM SHARMA	1	2404220100196	CSE	82
86	TANU SINGH	1	2404221530066	AIML	81.83
87	GANESH GUPTA	2	2304220310007	ECE	81.8
88	Md Zaid Sami	3	2204220800008	AG	81.8
89	HIMANSHI MAURYA	1	2404220540047	BT	81.78
90	MEHFOOZ KHAN	3	2204220200021	EE	81.76
91	DHRUV MAURYA	1	2404221520019	CS-AI	81.72
92	ANAMIKA SINGH	1	2404221530010	AIML	81.72
93	MANISH SAHANI	3	2204220100060	CSE	81.7
94	MD AKHTAR	3	2204220100062	CSE	81.7
95	SHYAMBADAN CHAUDHARY	3	2204220100111	CSE	81.7
96	RAVI KUMAR MADDHESHIYA	1	2404220400039	ME	81.67
97	SHIKHAR SINGH	2	2304220100163	CSE	81.65
98	DIVYANSH SHARMA	3	2304220319009	ECE	81.6
99	ANURAG OJHA	1	2404220100044	CSE	82
100	PRABHAKAR PATHAK	3	2204220100075	CSE	81.6
101	MITHILESH KUMAR	1	2404221530040	AIML	81.56
102	NEHAL TIWARI	3	2204220100071	CSE	81.5
103	NISHA KUMARI	2	2304220540051	BT	81.5
104	SHAURYA SINGH	2	2304220100161	CSE	81.5
105	SHASHWAT MANI TRIPATHI	3	2204220100100	CSE	81.5
106	ANURAG VERMA	2	2304220100001	CSE	81.45
107	NITESH SINGH YADAV	1	2404220100141	CSE	81
108	VINAY KUMAR	1	2404220100212	CSE	81
109	NEERAJ PASWAN	3	2204220100070	CSE	81.4
110	CHANDAN SINGH	1	2404220100067	CSE	81
111	MO SALAMAN KHAN	3	2204220100065	CSE	81.4
112	RISHABH AGARWAL	4	2104220130046	IT	81
113	VISHAL MADDHESHIYA	1	2404220100213	CSE	81
114	ADITYA KUMAR RAI	2	2304220400005	ME	81.3
115	ABHISHEK KUSHWAHA	3	2204220100006	CSE	81.3
116	ESHA YADAV	1	2404220310011	ECE	81.28
117	HARSHIT PANDEY	1	2404220100088	CSE	81
118	HIMANSHU PRAJAPATI	1	2404221520023	CS-AI	81.17
119	HARSHIT VERMA	1	2404221530027	AIML	81.17
120	ABHINAV KUMAR SINGH	3	2204220130001	IT	81
121	PRATEEK KUMAR SRIVASTAVA	3	2304220109013	CSE	81.1
122	SHARDENDU MISHRA	3	2.20422E+12	AIML	81.06
123	KARAN GUPTA	1	2404221520025	CS-AI	81.06
124	ANKIT SINGH	1	2404220540025	BT	81.06
125	ROHAN KUMAR SINGH	2	2304220100141	CSE	81
126	Dilshad Ali	3	2204220000011	CE	81.0
127	ARSHITA MISHRA	2	2.30422E+12	AIML	81.00
128	ALOK SINGH	1	2404221520008	CS-AI	80.94
129	AYUSH VERMA	1	2404220100065	CSE	81
130	KHUSHI SINGH	1	2404220540053	BT	80.94

## Academic Achievers

Sr. No.	Student Name	Year	Roll No.	Branch	%
131	SWATI	4	2104220130059	IT	81
132	LAVKUSH YADAV	1	2404220100109	CSE	81
133	PRAVESH KUMAR KUSHWAHA	2	2304220400023	ME	80.85
134	MOHAMMAD BASHARAT	1	2404220100119	CSE	81
135	ANNAPURNA BARNWAL	1	2404221530013	AIML	80.83
136	Pawan Kumar	4	2104220000037	CE	80.8
137	ADITYA RAI	3	2204220100012	CSE	80.8
138	ROHIT KUMAR	3	2204220200026	EE	80.82
139	AVINASH DWIVEDI	2	2304221520018	AI	80.80
140	DEVANSH NIGAM	1	2404220100075	CSE	81
141	RATNESH	1	2404220100166	CSE	81
142	ROHIT VISHWAKARMA	1	2404220100171	CSE	81
143	DEEPAK VISHWAKARMA	4	2104220130022	IT	81
144	SIDDHANT RANA	3	2204220100112	CSE	80.7
145	SAKSHI PANDEY	1	2404220100176	CSE	81
146	VIKASH GUPTA	1	2404221530069	AIML	80.67
147	RATNESH KUMAR	4	2104220400039	ME	80.6
148	ARPIT DUBEY	3	2204220100031	CSE	80.6
149	UJJWAL	3	2204220100120	CSE	80.6
150	RAJAN KUMAR PRAJAPATI	1	2404221520047	CS-AI	80.61
151	GUDDU KUMAR	3	2204220100046	CSE	80.6
152	RAVI PRAKASH	4	2204220109027	CSE	80.6
153	ANURAG VISHWAKARMA	3	2204220130013	IT	81
154	RAUNAK MISHRA	3	2204220130045	IT	81
155	KESHAV SHARMA	1	2404220400024	ME	80.50
156	ABHISHEK KUSHWAHA	3	2204220130002	IT	80
157	SUMIT KUMAR GOSWAMI	1	2404220100206	CSE	80
158	AKASH CHAURASIYA	4	2104220130005	IT	80
159	KHUSHI TIWARI	3	2204220100058	CSE	80.4
160	SONU KUMAR SINGH	3	2204220130056	IT	80
161	PRINCE KUMAR GOSWAMI	1	2404220100155	CSE	80
162	RUPENDRA KR KANNAUJIYA	1	2404220100173	CSE	80
163	AYUSH VERMA	1	2404220100064	CSE	80
164	SURAJ MISHRA	2	2304220100175	CSE	80.25
165	ABHISHEK SRIVASTAVA	3	2204220100009	CSE	80.2
166	SADHNA MADDHESHIYA	4	2204220109030	CSE	80.2
167	SANJANA CHAUHAN	2	2304220130050	IT	80
168	RAGHAV SIDDHARTH	3	2204220130039	IT	80
169	SHUBHAM PANDEY	4	2104220130055	IT	80
170	SHAKTIMAN GUPTA	3	2304221529014	AI	80.12
171	Amitesh Tripathi	3	2304220009006	CE	80.1
172	Saeed Alam	3	2304220109015	CSE	80.1
173	MD KAIF KHAN	1	2404220100116	CSE	80
174	PRAGYAN SINGH CHAUHAN	1	2404220100149	CSE	80
175	MANSI MISHRA	1	2404221530039	AIML	80.11
176	PRACHI PANDEY	4	2204220109026	CSE	80.1
177	PRANJUL MISHRA	3	2204220400025	ME	80.1
178	SAMEER KUMAR PANDEY	1	2404220100177	CSE	80
179	BAIBHAV SINGH	2	2304220100047	CSE	80.05
180	RAVI PRAKASH VERMA	2	2304220540068	BT	80
181	SANJANA SINGH	2	2304220540070	BT	80
182	UTKARSH UPADHYAY	3	2204220100122	CSE	80
183	Vishal Singh	4	2104220800020	AG	80
184	HIMANSHU SINGH TOMER	1	2404221530029	AIML	79.94
185	ARPIT VERMA	4	2104220100010	ME	79.9
186	SATYANAND GUPTA	4	2104220130051	IT	80
187	ADARSH GUPTA	2	2304220100011	CSE	79.9
188	DEEPAK KUMAR GUPTA	3	2204220100039	CSE	79.9
189	SAGAR SHARMA	3	2204220100093	CSE	79.9
190	OMKAR VISHWAKARMA	3	2204220130036	IT	80
191	SURAJ SINGH	1	2404220200041	EE	79.78
192	KHUSHI GUPTA	3	2204220100057		